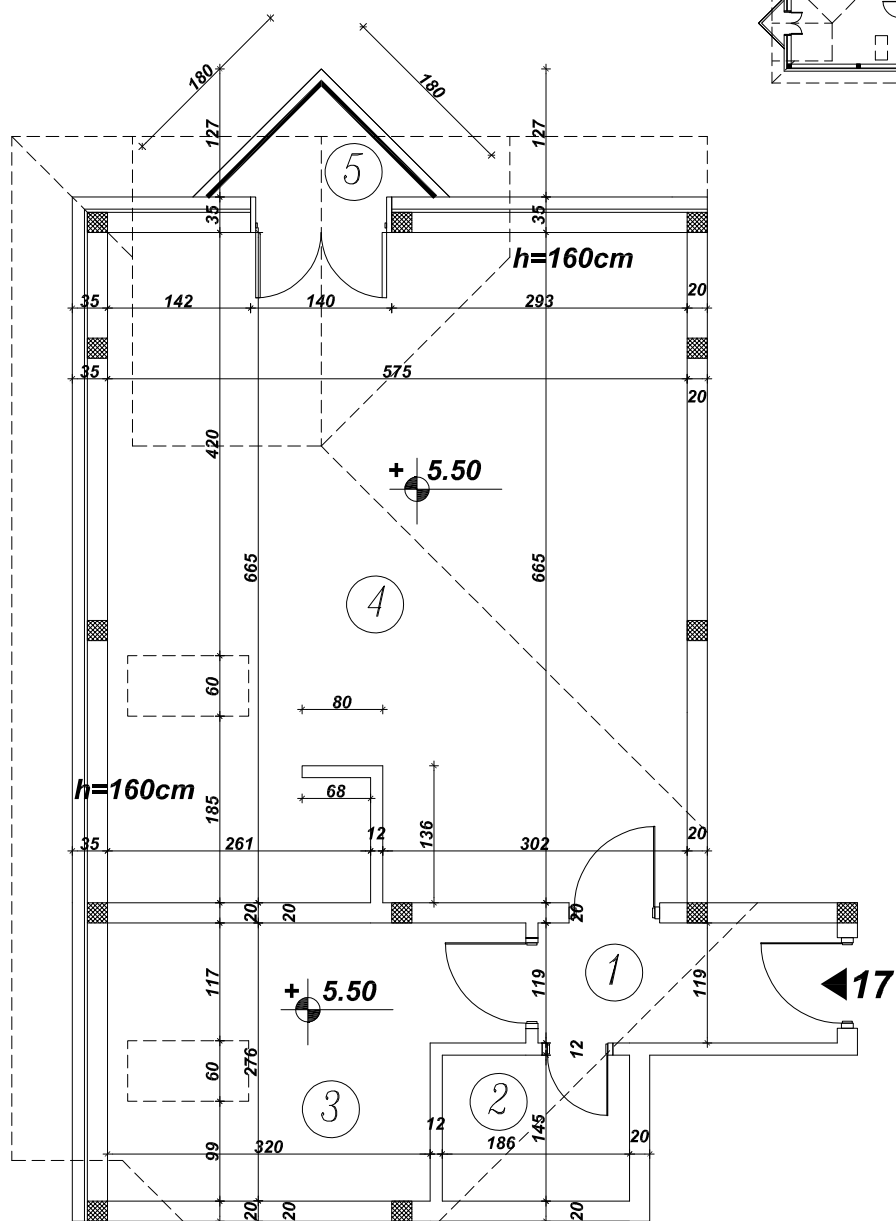
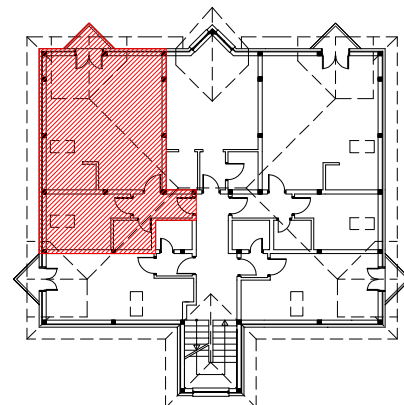


# ZGRADA H3''

## POLOŽAJ Stana br. 17. U ZGRADI



### STAN BR. 17. – potkrovlje

OBRACUN POVRŠINA		
ozn.	namena	kor. P(m <sup>2</sup> )
1	hodnik	3.50
2	kupatilo	2.67
3	soba	10.18
4	dnevna soba	38.44
5	terasa	1.21
	ukupno	56.00