


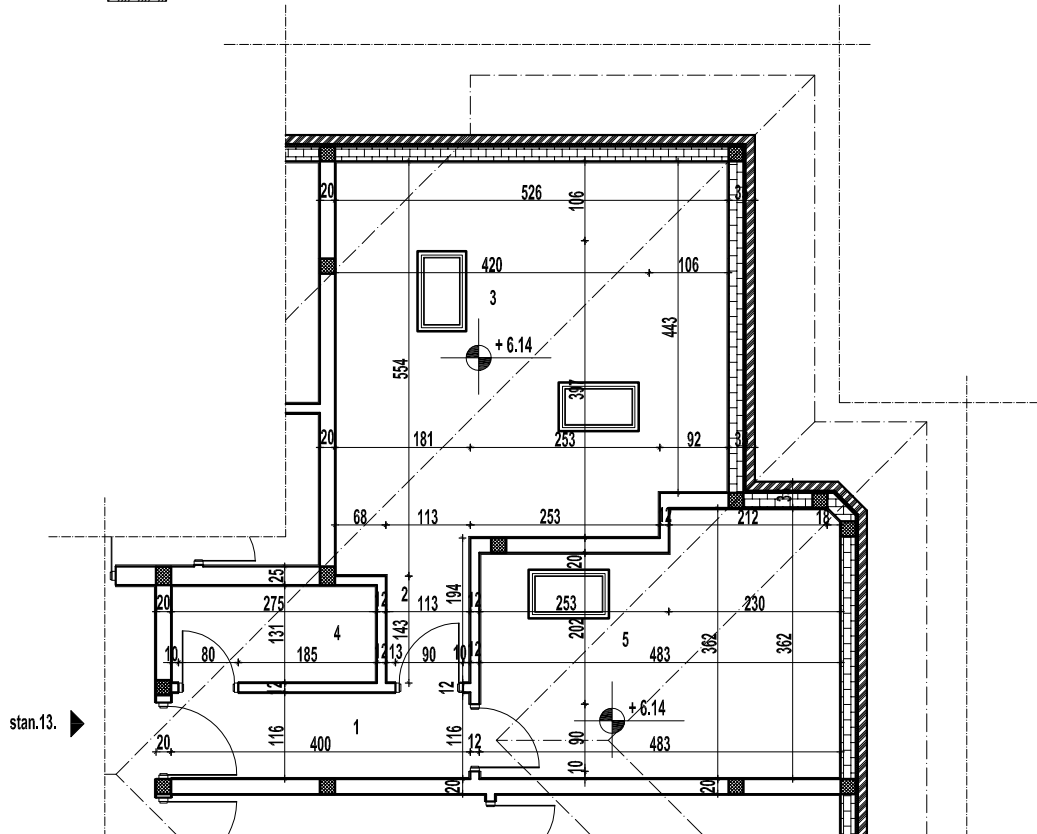
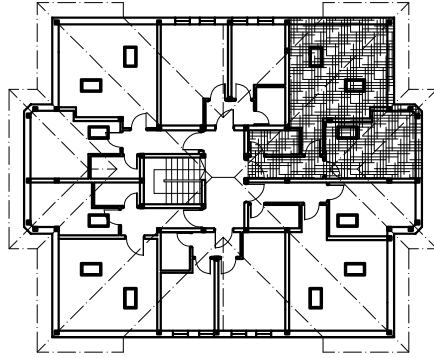


-  zid od giter blokova d=20cm
 stiropor d=3cm
 zid od pune opeke d=12cm



Stan br.13.

OBRACUN POVRŠINA				
ozn.	namena	P(m ²)	pod	O.
1	hodnik	4.44	parket	1016.00
2	degazman	1.56	parket	504.00
3	dnevna s.	26.40	parket	2144.00
4	kupatilo	3.44	keramicke pl.	796.00
5	spavaca s	15.62	parket	1664.14
		51.46		